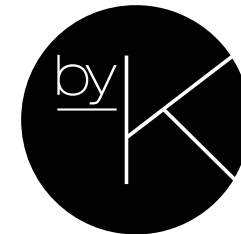


Powerdot MIDI

□ 935-PM61W
■ 935-PM61



A - Removable installation

B - Permanent installation

CONTENT:



x1



x1



x2

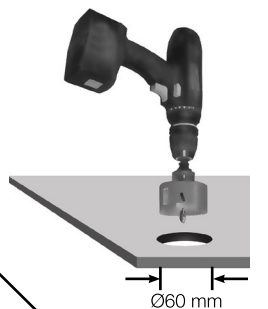


- 1 USB CHARGER
(5V, 2.1A)

- 1 Schuko socket

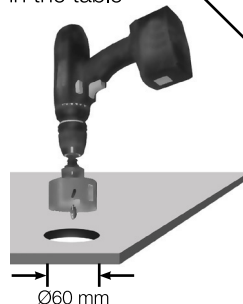
- 1.5 meter cable

1A DRILL
Drill a hole
in the table



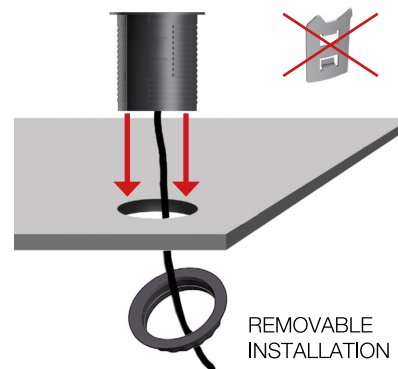
REMOVABLE
INSTALLATION

1B DRILL
Drill a hole
in the table

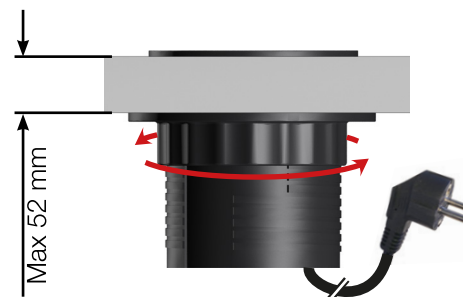


PERMANENT
INSTALLATION

2A INSERT
Insert Powerdot into the hole and
feed the power plug through the
plastic fastening nut (without using
the cable clips).

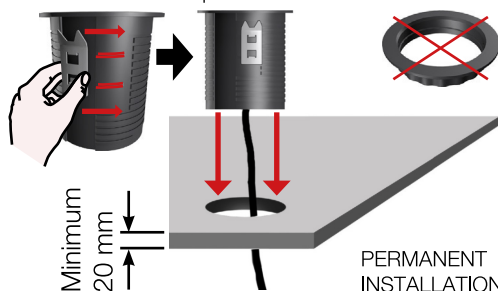


3A TURN CLOCKWISE & PLUG IN
Turn the plastic fastening nut as far
up the thread as possible. Make sure
it has been thoroughly tightened.
Lastly, plug it in to the wall socket.



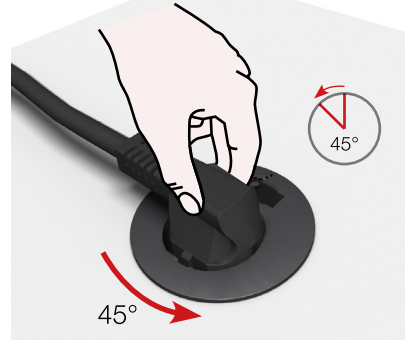
2B ATTACH & INSERT (NON REMOVABLE)
Attach clips by guiding them into the side
tracks. The clips will keep the product in
place without the fastening nut. Push the
Powerdot all the way down the hole. Lastly,
plug it in to the wall socket.

NOTE! Once inserted, removing the product will
prove to be very difficult without damaging the
table and/or the product.



HOW TO REMOVE (WITH CLIPS)
To increase your chances of
removing once installed with clips,
turn the grommet clockwise. Until
the clips re-position and loosen up.

NOTE! The table or product might get
damaged during the process.



PULL UPWARDS
If you successfully loosened up the
clips. Pull upwards until fully removed.

